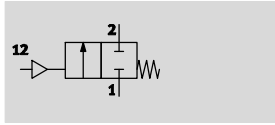



Angle seat valve VZXF

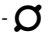
FESTO

Technical data – Gunmetal (red brass), temperature of medium –10 ... +80 °C

Function



-  - Flow rate Kv
3.5 ... 28 m³/h

-  - Connecting thread
G $\frac{1}{2}$... G2



General technical data			
Process valve connection	G $\frac{1}{2}$	G $\frac{3}{4}$	G1
Auxiliary pilot air port	G $\frac{1}{8}$		
Nominal size DN	15	20	25
Nominal width [mm]	12	16	23
Valve function	2/2-way, closed, monostable		
Design	Poppet valve with spring return		
Type of mounting	In-line installation		
Mounting position	Any		
Direction of flow	Non-reversible		
Exhaust function	No flow control		
Sealing principle	Soft		
Reset method	Mechanical spring		
Type of actuation	Pneumatic		
Type of pilot control	Externally actuated		

Process valve connection	G1 $\frac{1}{4}$	G1 $\frac{1}{2}$	G2
Auxiliary pilot air port	G $\frac{1}{8}$		
Nominal size DN	32	40	50
Nominal width [mm]	29	35	43
Valve function	2/2-way, closed, monostable		
Design	Poppet valve with spring return		
Type of mounting	In-line installation		
Mounting position	Any		
Direction of flow	Non-reversible		
Exhaust function	No flow control		
Sealing principle	Soft		
Reset method	Mechanical spring		
Type of actuation	Pneumatic		
Type of pilot control	Externally actuated		

Angle seat valve VZXF

Technical data – Gunmetal (red brass), temperature of medium –10 ... +80 °C

Operating and environmental conditions			
Process valve connection	G1/2	G3/4	G1
Nominal pressure of process valve PN	16		
Operating medium	Compressed air to ISO 8573-1:2010 [7:4:4]		
Medium	Filtered compressed air, grade of filtration 200 µm		
	Mineral oil-based hydraulic oil		
	Inert gases		
	Mineral oil		
	Neutral fluids		
	Water		
Max. viscosity	[mm ² /s]	600	
Ambient temperature	[°C]	–10 ... +60	
Temperature of medium	[°C]	–10 ... +80	
CE marking (see declaration of conformity)	–		

Process valve connection	G1¼	G1½	G2
Nominal pressure of process valve PN	16		
Operating medium	Compressed air to ISO 8573-1:2010 [7:4:4]		
Medium	Filtered compressed air, grade of filtration 200 µm		
	Mineral oil-based hydraulic oil		
	Inert gases		
	Mineral oil		
	Neutral fluids		
	Water		
Max. viscosity	[mm ² /s]	600	
Ambient temperature	[°C]	–10 ... +60	
Temperature of medium	[°C]	–10 ... +80	
CE marking (see declaration of conformity)	To EU Pressure Equipment Directive		

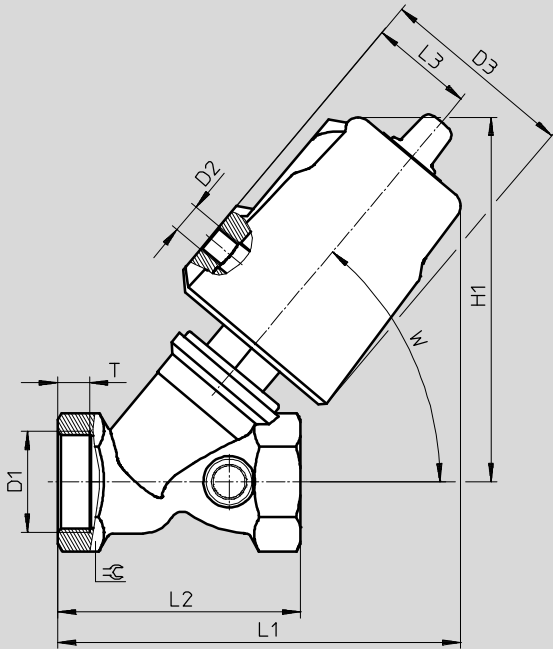
Materials		
Angle seat valves		Material number
1 Housing	Gunmetal (red brass)	CC499K
2 Actuator head	Brass	–
3 Stem seal	NBR	–
	Seat seal	PTFE
– Note on materials	Contains paint-wetting impairment substances, RoHS compliant	

Angle seat valve VZXF

Technical data – Gunmetal (red brass), temperature of medium –10 ... +80 °C

Dimensions

[Download CAD data →](#)



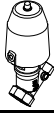
	D1	D2	D3 Ø	H1	L1	L2	L3	T	W	☞
VZXF-L-...-G12-...-H3B1-50-...	G½	G⅛	62	112	123	66	34	8	50°	27
VZXF-L-...-G34-...-H3B1-50-...	G¾			117	130	75		9		33
VZXF-L-...-G1-...-H3B1-50-...	G1			121	133	80		10.5		41
VZXF-L-...-G114-...-H3B1-50-...	G1¼			139	154	97		12.5		50
VZXF-L-...-G112-...-H3B1-50-...	G1½			145	161	107		14.5		56
VZXF-L-...-G2-...-H3B1-50-...	G2			154	171	124		16.5		68

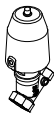


Angle seat valve VZXF

Technical data – Gunmetal (red brass), temperature of medium –10 ... +80 °C

★ Core product range

Ordering data – Angle seat valve VZXF						
	Process valve connection	Flow rate Kv [m³/h]	Medium pressure [bar]	Corrosion resistance CRC ¹⁾	Product weight [g]	Part No. Type
	G1/2	3.7	0 ... 16	1	1200	★ 1002501 VZXF-L-M22C-M-B-G12-120-H3B1-50-16
	G3/4	5.2	0 ... 16		1300	★ 1002503 VZXF-L-M22C-M-B-G34-160-H3B1-50-16
	G1	9.6	0 ... 10		1500	★ 1002505 VZXF-L-M22C-M-B-G1-230-H3B1-50-10

Ordering data – Angle seat valve VZXF						
	Process valve connection	Flow rate Kv [m³/h]	Medium pressure [bar]	Corrosion resistance CRC ¹⁾	Product weight [g]	Part No. Type
	G1/2	3.5	0 ... 16	1	1200	1002500 VZXF-L-M22C-M-A-G12-120-H3B1-50-16
	G3/4	6.7	0 ... 16		1300	1002502 VZXF-L-M22C-M-A-G34-160-H3B1-50-16
	G1	10.8	0 ... 16		1500	1002504 VZXF-L-M22C-M-A-G1-230-H3B1-50-16
	G1 1/4	6	0 ... 7		1900	1002507 VZXF-L-M22C-M-B-G114-290-H3B1-50-7
		19	0 ... 10			1002506 VZXF-L-M22C-M-A-G114-290-H3B1-50-10
	G1 1/2	16.5	0 ... 6		2300	1002509 VZXF-L-M22C-M-B-G112-350-H3B1-50-6
		23				1002508 VZXF-L-M22C-M-A-G112-350-H3B1-50-8
	G2	23	0 ... 3		2800	1002511 VZXF-L-M22C-M-B-G2-430-H3B1-50-3
		28	0 ... 4			1002510 VZXF-L-M22C-M-A-G2-430-H3B1-50-4

1) Corrosion resistance class CRC 1 to Festo standard FN 940070
 Low corrosion stress. For dry indoor applications or transport and storage protection. Also applies to parts behind covers, in the non-visible interior area, and parts which are covered in the application (e.g. drive trunnions).

Festo core product range

- ★ Ready for dispatch from the Festo factory in 24 hours
- ☆ Ready for dispatch in 5 days maximum from stock